

Andover Forward View

Planning future health services to fit the
needs of the Andover Population

Dr Rory Honney, Clinical Director West
Hampshire CCG, GP at St Mary's surgery





Our big ideas for the next 20 years:

- **Deliver state-of-the-art facilities in Andover in order to promote active healthy lifestyles.**
- **Promote and encourage activities that Andoverians of all ages and abilities can take part in and have fun whilst being healthy.**
- **Health is everyone's business, so let's create a network where voluntary, community and health providers work together to deliver quality care and support for Andover.**
- **The mental wellbeing of our town will be supported by the promotion of good mental health. We will work together to make sure people have access to the right support at the right time.**
- **Work with young people and their families to encourage healthy habits which will become part of everyday life.**
- **But if you are ill, your local GP, health and NHS will provide good access to high quality services that meet your needs.**

Aims for today's session:

- Build on the work from the last session
- Update the group on the work that is ongoing
- Understand what the priorities are for those people using health services
- To understand how we can continue to engage with people locally around the work ongoing in Andover



What is the Andover Forward view?

- A developing vision of how we see local health services developing over the next five years.
- An overview of the developing needs of the local population
- A plan to develop services in order to:
 1. Improve patient outcomes
 2. Reduce the pressures on GP practices
 3. Reduce the pressures on the rest of the NHS
 4. Provide services which are value for money



Why the Andover Forward view?

1. National recognition that NHS needs to change to take into account the **specific needs of local communities**
2. Andover is expecting a dramatic **increase in population** over the next 15 years
3. Have a range of **healthcare property** in Andover which could be used more effectively/needs updating



Andover population

- 59,548 people living in Andover, we expect this to rise to over 75,000 by 2036
 - 24% 0-19 years old
 - 60% - working age
 - 17% - over 65
 - 2.3% over 85
- Higher rates than elsewhere of:
 - Respiratory conditions e.g. asthma
 - Depression and other mental health conditions
 - Asthma
 - High blood pressure
 - Diabetes



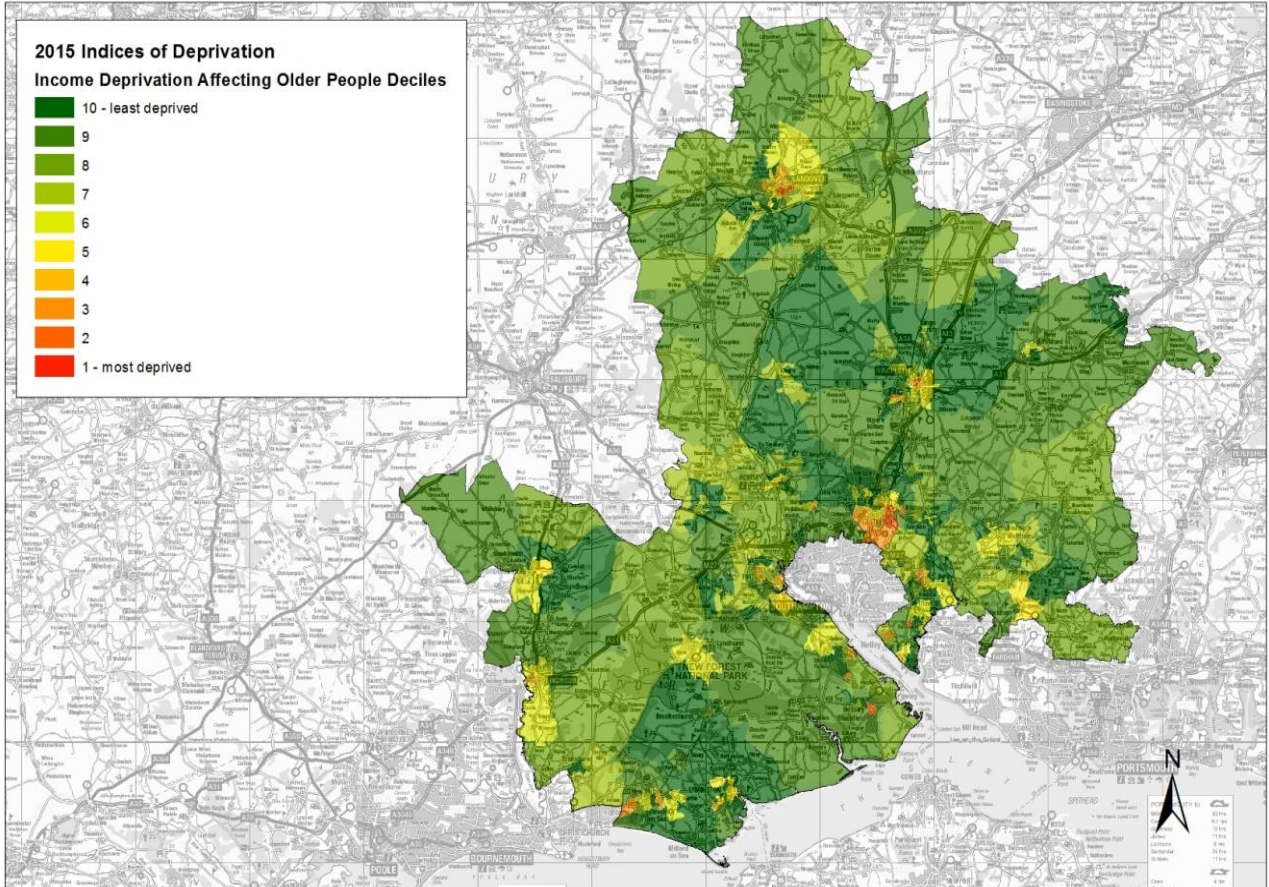
Health inequalities in Andover



Dahlgren, G and Whitehead, M (1991) Rainbow model of health in Dahlgren, G (1995) European Health Policy Conference: Opportunities for the future. Vol 11 – Intersectoral Action for Health. Copenhagen: WHO Regional Office for Europe.

Health inequalities in Andover – Key findings

- 70%
- Ger and do t
- Mos
- 80% sma
- Larg rela



11
could
GP
rt or

© Crown copyright and database rights 2015 Ordnance Survey 100019180. Use of this data is subject to terms and conditions. You are granted a non-exclusive, royalty free, revocable licence solely to view the Licensed Data for non-commercial purposes for the period during which HCC makes it available. You are not permitted to copy, sub-license, distribute, sell or otherwise make available the Licensed Data to third parties in any form. Third party rights to enforce the terms of this licence shall be reserved to Ordnance Survey

Our five priorities



The right care, at the right place, at the right time

Quality services, better health



What does this mean for Andover?



Quality services, better health



With the above in mind.....

- On your tables look at the people profiles and think about the needs of the individuals....
- What support and services might this family/person need now?
- Who could they get support from and how could they access this support?
- What support could they need over the next five years?



FEEDBACK FROM TABLES

Quality services, better health



Feedback from Andover GPs....

- Direct access to see a physiotherapist
- Direct access to mental health services
- Care Navigation (social prescribing)
- Access to services for children and young people with more mild mental health problems
- Group consultations and health education
- Weight management and stop smoking services
- Hospital services delivered in Andover (e.g. cardiology service, paediatric services)



Feedback from Andover GPs....

On the laminated sheets on the table put a sticker on the idea which you think will.....

-RED - have the most impact on keeping people well/ supporting people to stay health

- BLUE - Help to reduce the pressure on the local GP surgeries

- GREEN - Help to reduce the pressure on the hospital and other NHS services



How can we continue to keep the local population engaged in the Andover Forward View?

5 minute discussion on tables





West Hampshire
Clinical Commissioning Group

Next steps...

Quality services, better health

